

124°14'E

124°16'E

124°18'E

124°20'E

124°22'E

124°24'E

### LEGEND

- Municipal Boundary
- Barangay Boundary
- Rivers and Creeks
- National Road
- Provincial Road
- Municipal Road
- Barangay Road

### Annual Growth Rate 1990-1995

- Decreased by over 4%
- Decreased by 2% to 4%
- Decreased by up to 2%
- Increased by up to 2%
- Increased by 2% to 5%
- Increased by over 5%



Republic of the Philippines  
PROVINCE OF BOHOL  
City of Tagbilaran



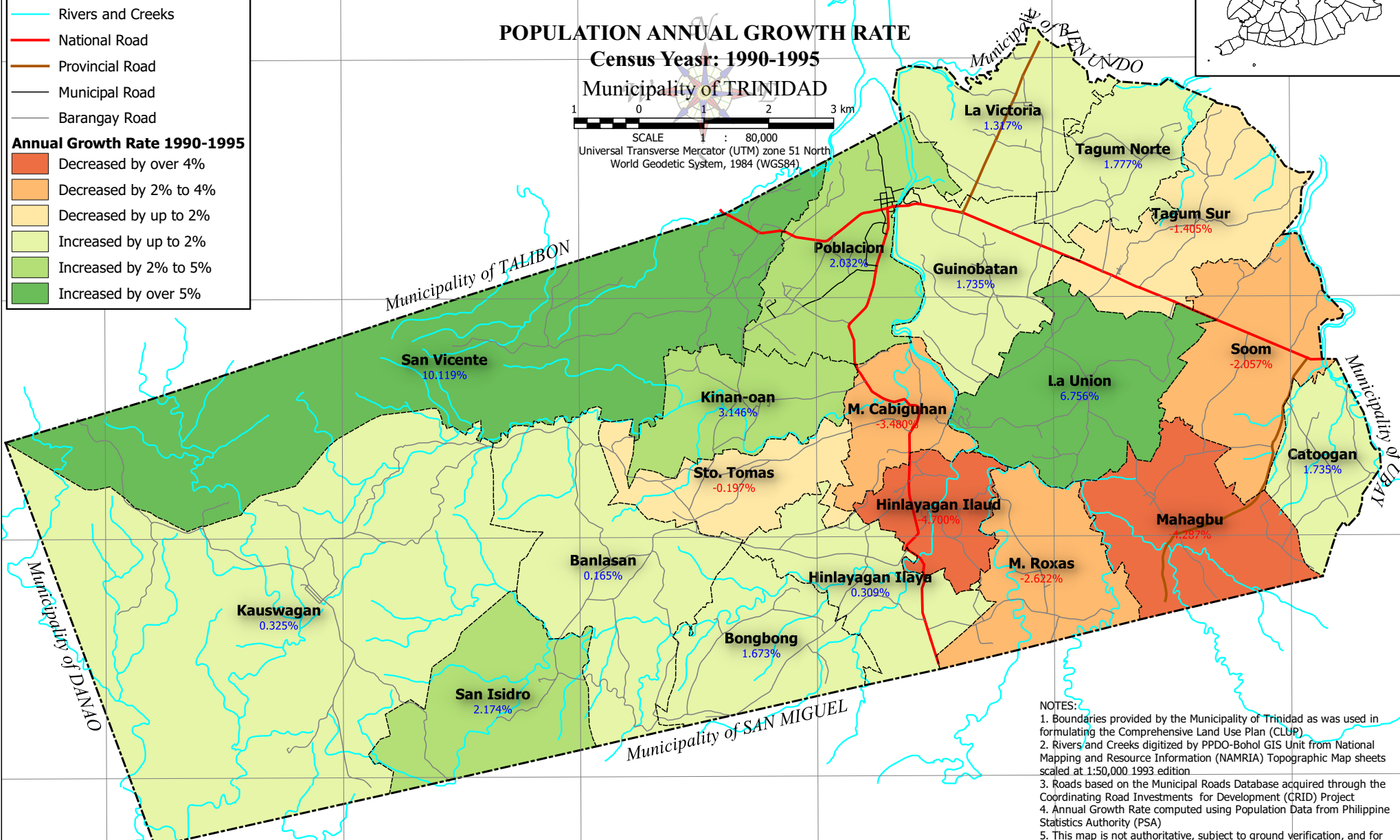
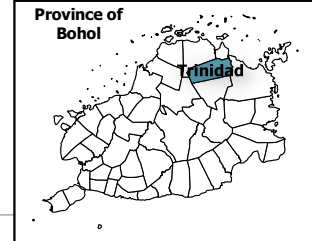
## PROVINCIAL PLANNING AND DEVELOPMENT OFFICE

# POPULATION ANNUAL GROWTH RATE

### Census Year: 1990-1995 Municipality of TRINIDAD



SCALE 1 : 80,000  
Universal Transverse Mercator (UTM) zone 51 North  
World Geodetic System, 1984 (WGS84)



#### NOTES:

1. Boundaries provided by the Municipality of Trinidad as was used in formulating the Comprehensive Land Use Plan (CLUP)
2. Rivers and Creeks digitized by PPDO-Bohol GIS Unit from National Mapping and Resource Information (NAMRIA) Topographic Map sheets scaled at 1:50,000 1993 edition
3. Roads based on the Municipal Roads Database acquired through the Coordinating Road Investments for Development (CRID) Project
4. Annual Growth Rate computed using Population Data from Philippine Statistics Authority (PSA)
5. This map is not authoritative, subject to ground verification, and for indicative use only

124°14'E

124°16'E

124°18'E

124°20'E

124°22'E

124°24'E